

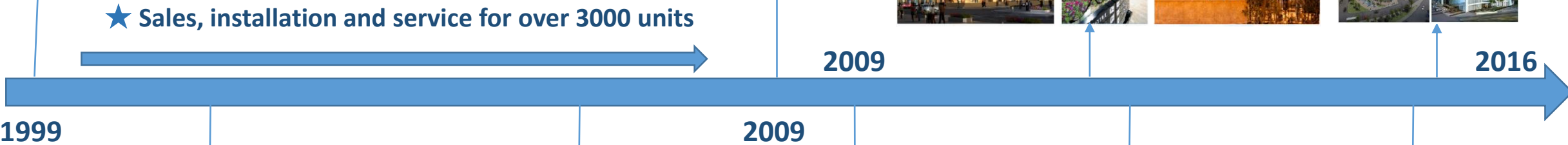
FABRE ELEVATOR



ThyssenKrupp was established in Turkey with 25% local partnership. Ahmet Gökhan was founder partner and managing director for 10 years.

ThyssenKrupp became 100% shareholder.

Major projects in Azerbaijan, Georgia, Saudi Arabia, Kuwait



- Metros**
- ★ Istanbul,
 - ★ Ankara,
 - ★ Izmir,
 - ★ Adana,
 - ★ Bursa,
 - ★ Kayseri

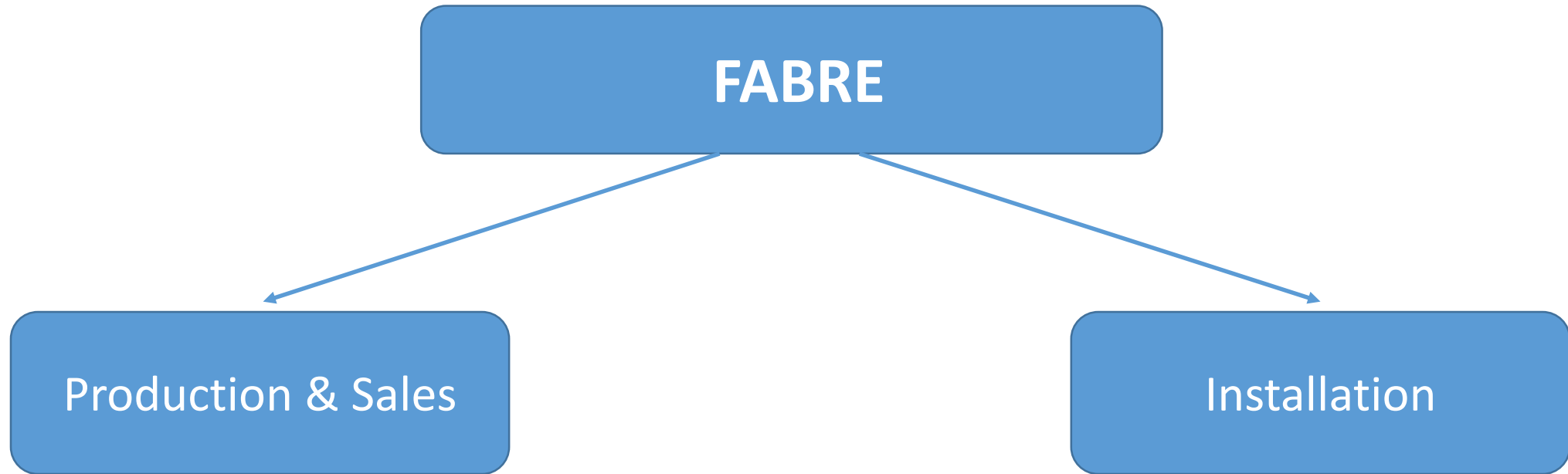


- Airports**
- ★ Esenboga (Ankara)
 - ★ Antalya (2. Terminal)
 - ★ Dalaman (Mugla)
 - ★ Adnan Menderes (Izmir)
 - ★ Atatürk (Istanbul)

★ Fabre
★ Verti
companies were founded for domestic and abroad sales, Installation and production with many high level managers and technical staff who left ThyssenKrupp Turkey.



Metro and underpass projects in Azerbaijan since 2009



FABRE

Production & Sales



FABRE

Production & Sales

Production (Components)

Cars, car frames, counterweight frames, doors, bed plates, steel construction, accessories

Production (Complete Elevators)

- MRL Elevator systems, MR Elevators systems, Hydraulic systems
- From 250 kg capacity to 8000 kg capacity
- From 0,2 m/s speed to 4,0 m/s speed
- Capable of design & production for non standard dimensions
- Capable of low headroom & pit

Sales

Turkey, Azerbaijan, Georgia, Turkmenistan, Saudi Arabia, Kuwait, Qatar, Palestine, Israel, Russia, Libya, Algeria, Croatia, Serbia, Romania, Bahrain, Oman, Morocco, Nigeria, Sudan, France, Pakistan

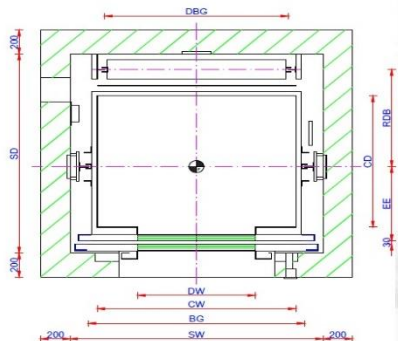
LARA

MR Systems

Traction elevator machine rooms are located directly over the hoist way of the elevator served by that equipment. On bottom drive type, machine rooms are usually located next to the elevator bank or bottom of the shaftway. In older installations where space is at a premium; particularly in high-rise buildings, the machine room is often split over two levels in order to house the traction equipment, motor-generator (MG) sets and the relay controllers. Typically, an upgrade to a solid state controller and variable frequency drive (in place of the M-G set) can free up this space for other uses.

Safety Rules For The Construction and Installation of Lifts

- EN 81-1** European Standard (Previous Version)
- EN 81-20** European Standard (New Version)
- EN 81-28** Lifts for the transport of persons and goods European Standard
- EN 81-70** Accessibility to lifts for persons including persons with disability - European Standard
- EN 81-73** Behaviour of lifts in the event of fire European Standard



Machine Bed Plate



Controller



Geared Machine



Capacity	KG	320	400	450	630	800	1000	1200	1600	2000
Passenger	Person	4	5	6	8	10	13	16	21	26
Cabin Internal Width	m²	0.9	1.1	1.2	1.54	1.89	2.24	2.76	3.36	4.05
Cabin Internal Depth	mm	900	1100	1200	1100	1350	1600	1200	2100	1500
Cabin Internal Height	mm	1000	1000	1000	1400	1400	1400	2300	1600	2700

Please contact with sales person for non standart dimension.

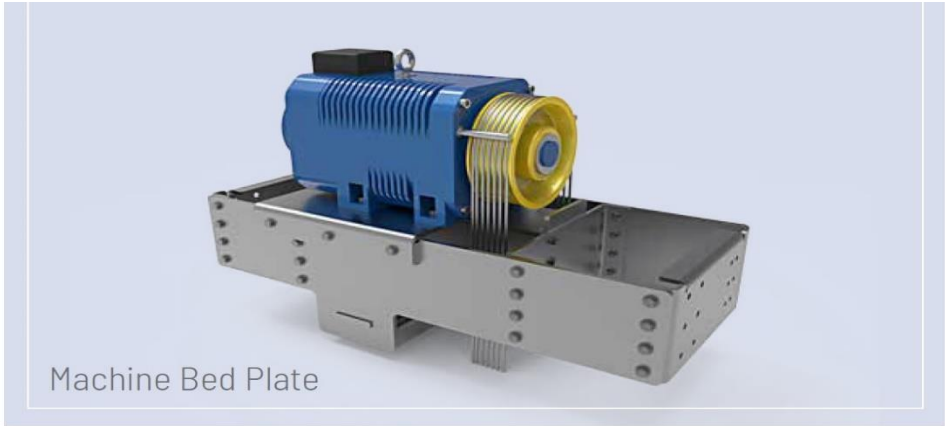
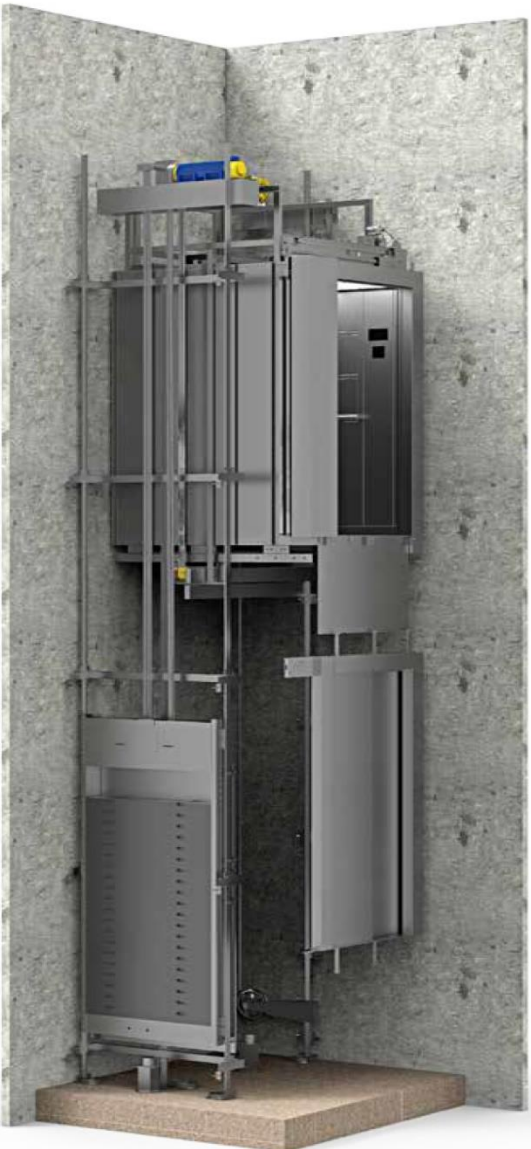
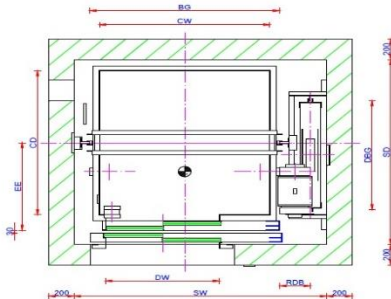
ERA

MRL Systems

Machine room less elevators do not have a fixed machine room on the top of the hoistway, instead the traction hoisting machine is installed either on the top side wall of the hoistway or on the bottom of the hoistway. The motor is installed using a permanent magnet which "sticks" the motor permanently and work with Variable Voltage Variable Frequency (VVVF) drive. Some of the hoisting machines are using gearless synchronous motors instead conventional induction motors. This design eliminates the need of a fixed machine room and thus saves much building's space. Almost all the traction MRL elevators are gearless traction.

Safety Rules For The Construction and Installation of Lifts

- EN 81-1** European Standard (Previous Version)
- EN 81-20** European Standard (New Version)
- EN 81-28** Lifts for the transport of persons and goods European Standard
- EN 81-70** Accessibility to lifts for persons including persons with disability - European Standard
- EN 81-73** Behaviour of lifts in the event of fire European Standard



Machine Bed Plate



Controller



Gearless Machine

Capacity	KG	320	400	450	630	800	1000	1200	1600	2000
Passenger	Person	4	5	6	8	10	13	16	21	26
Cabin Internal Width	m²	0.9	1.1	1.2	1.54	1.89	2.24	2.76	3.36	4.05
Cabin Internal Depth	mm	900	1100	1200	1100	1350	1600	1200	2100	1500
Cabin Internal Height	mm	1000	1000	1000	1400	1400	1400	2300	1600	2700

Please contact with sales person for non standart dimension.

FABRE

Production & Sales

Machinery

1 laser machine, 3 bending machines, 1 guillotine shear, 1 punch machine,
1 spot welding machine, 1 eccentric machine, 1 press machine,
1 sawing machine



FABRE

Logistics & Warehouse



FABRE

Logistics & Warehouse



References

1999-2009

as ThyssenKrupp Elevator Turkey



Bursa Metro Phase 1



Istanbul Taksim-Kabatas Funiculer



Izmir Adnan Menderes Airport



Bursa Metro Phase 2

2003

2005

2006

2006

1999

2004

2005

2006

Istanbul Taksim-4 Levent Metro

Antalya Airport 2. Terminal

Mugla Dalaman Airport

Kayseri Metro





Bursa Metro Phase 3



Adana Metro



Istanbul Bagcilar Otogar Metro

2007

2008

2009

2006

2007

2008

Ankara Esenboga Airport

Izmir Metro

Istanbul Taksim Yenikapı
Metro

Istanbul 4. Levent Ayazağa
Metro



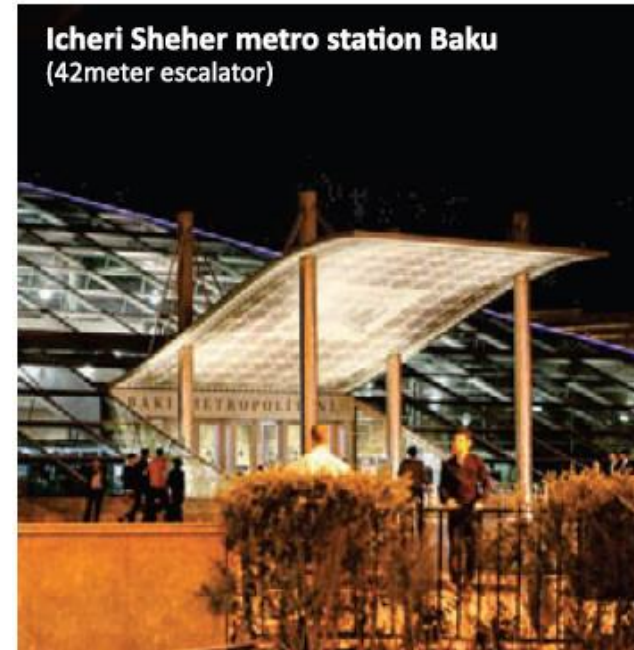
References

2010-2018

as Verti MMC

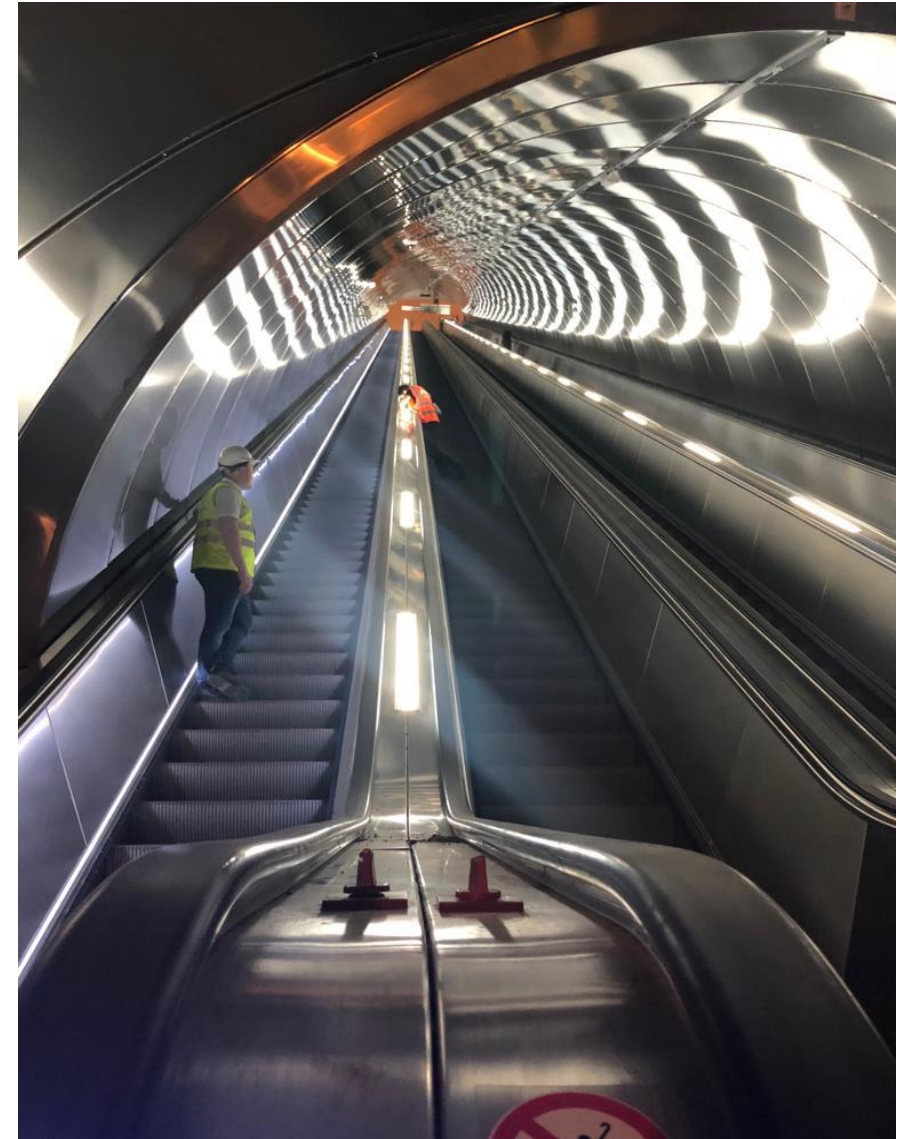
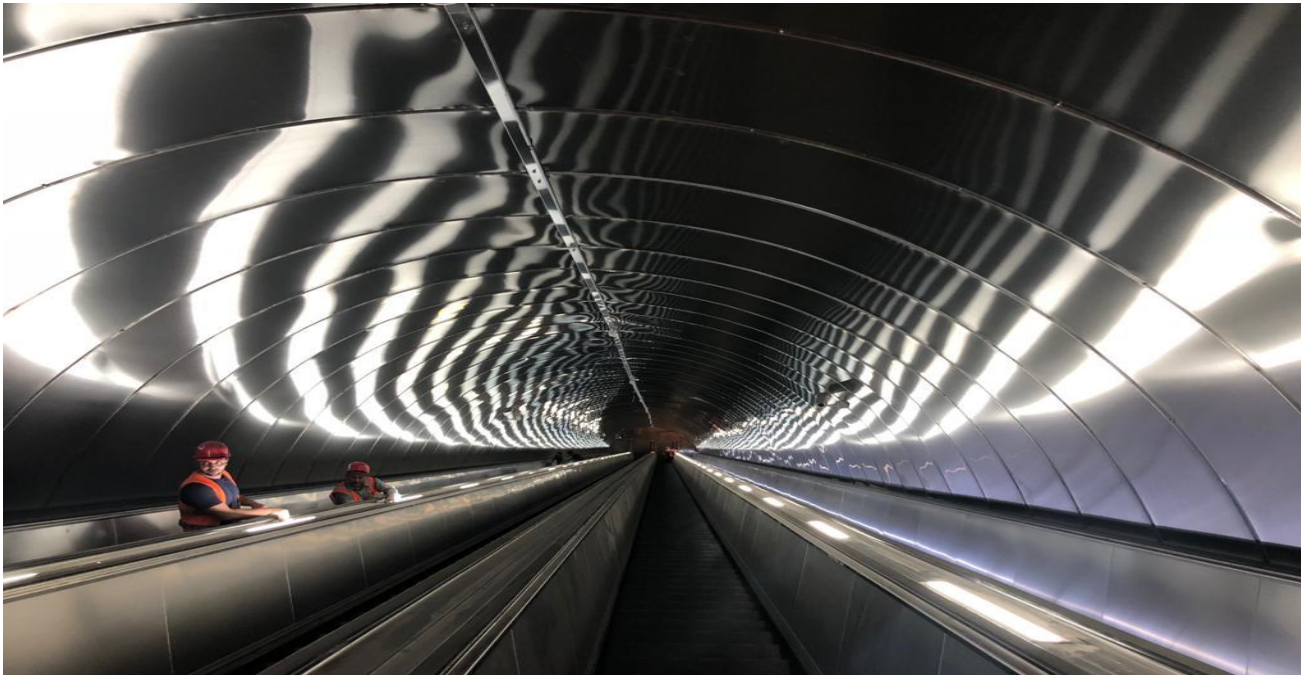
Metro Projects (Azerbaijan)

- ★ All metro projects since 2009
- ★ 2nd highest escalator of Europe with 42 m rise



Metro Projects (Baku, Azerbaijan)

- ★ 2nd highest escalator of Europe with 45 m rise.



Underpass Projects (Azerbaijan)

★ Over 100 escalators



Heydar Aliyev Museum (Azerbaijan) 28 escalators

★ Symbolic building of Azerbaijan
which was designed by Zaha Hadid



Heydar Aliyev Center
(28 escalators)



Socar Tower (Azerbaijan)

17 elevators, 4 escalators

2 Twin 6,0-4,0 m/s

3 Twin 4,0-2,5 m/s

3 Single 6,0 m/s

1 FF elevators 4,0 m/s

★ Highest tower

★ Highest speed of elevators



Azersu Tower (Azerbaijan)

10 elevators

6 Elevators with 3,5 m/s

115 m travel height



References

2015-2019

as Fabre

CMA Tower (Riyadh, Saudi Arabia)

7 elevators
(5 TWIN 5,0-3,5 m/s)

2 elevators 5,0 m/s

★ 371 m building
height

COMPLETED



Hilton Hotel & Residence (Riyadh, Saudi Arabia)

28 elevators

11 elevators 4,0 m/s



COMPLETED

Batoyoor Tower (Dammam, Saudi Arabia)

6 elevators 3,0 m/s

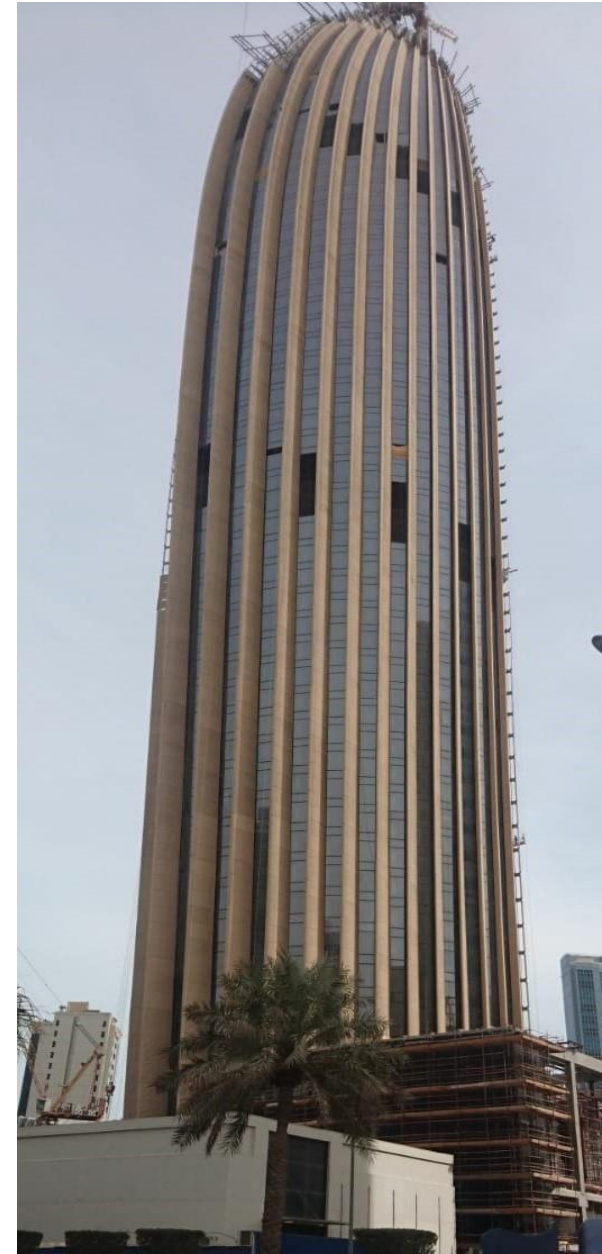


COMPLETED

National Bank of Kuwait (Kuwait)

10 TWIN 6,0-7,0 m/s
3 Elevators 6,0 m/s

★ 270 m building
height



Bahria Town Icon (Karachi, Pakistan)

3 Doubledeckers 7,0 m/s

5 Elevators 3,0 m/s

4 Elevators 5,0 m/s

★ 275 m building height



Trinity Tower (Paris, France)

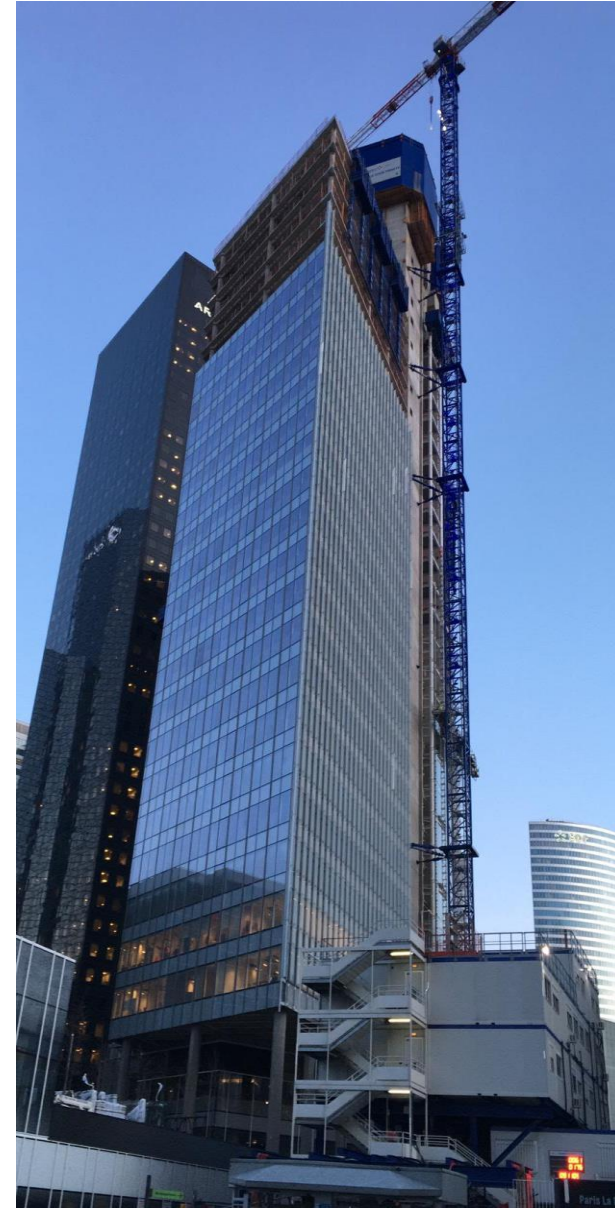
2 TWIN 4,0 -2,5m/s

2 TWIN 4,0 -4,0m/s

4 TWIN 6,0 -4,0m/s

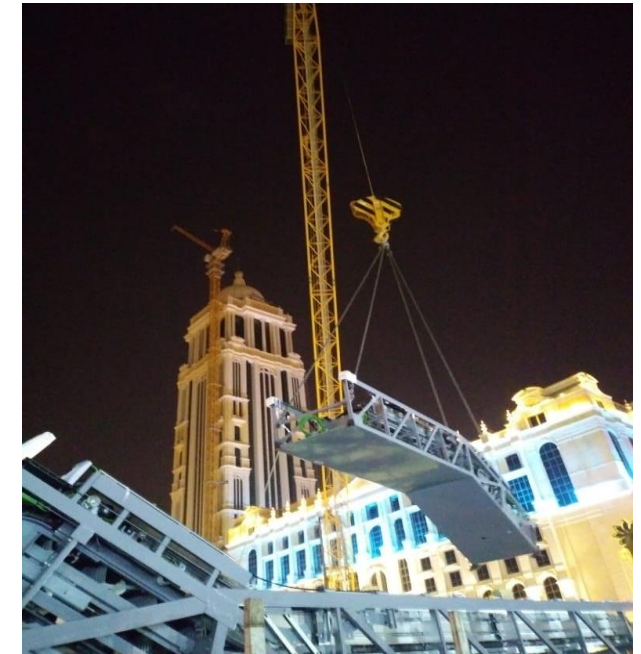
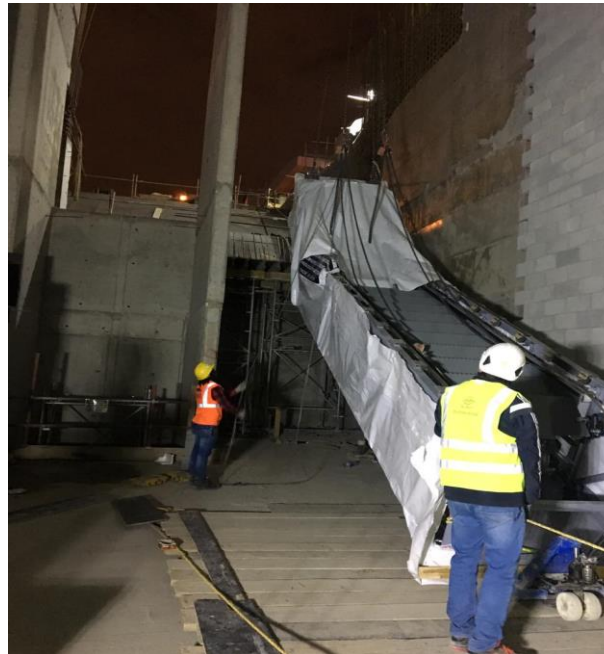
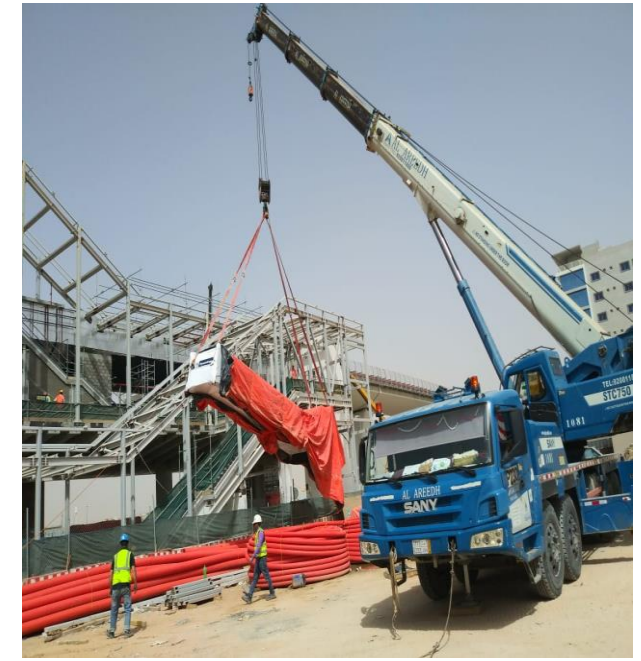
2 Elevators 2,5 m/s

★ 140 m building
height



Riyadh Metro Line 1-2 (Saudi Arabia)

413 Escalators





THANK YOU